

Romania



Neamț Land

European destination of excellence



Contents

- 02 Bicz Gorges
- 03 Șugăului Gorges-Munticelu
- 04 Princely Court in Piatra-Neamț
- 10 Vânători-Neamț Natural Park
- 12 Neamț Fortress
- 13 Neamț Monastery
- 14 Lake Izvorul Muntelui
- 16 Ceahlău National Park
- 20 "Ion Creangă" Memorial House
- 21 "Neculai Popa" Ethnography Museum
- 22 Lake Guejdel
- 23 Lakes: Pângărați, Bâta Doamnei, Vaduri
- 24 Customs and traditions in Neamț County
- 26 Traditional clothing in Neamț County
- 28 Gastronomy
- 30 Useful Information
- 31 Accommodation and meals

Airports

"Henri Coandă" International Airport, Bucharest +40 21 204.1000
International Airport in Iași +40 232 271 590
"George Enescu" International Airport, Bacău +40 234 575 400
"Ștefan cel Mare" International Airport, Suceava +40 230 529 999

Neamț County Council



Dear travellers in Neamț Land,

As President of Neamț County Council, it is a great pleasure to welcome you to **Neamț Land**, one of the destinations that have recently joined the "European Destinations of Excellence (EDEN) Network"! I am extremely proud that our perseverance and sustained efforts to increase the visibility of **Neamț Land** as a tourist destination, as well as the promotion of sustainable tourism in the region have been recognized by including Neamț County among the tourism destinations of excellence across Europe.



Neamț Land is, nowadays, one of the most well-known destinations and landmarks of Romania, through its unique tourist attractions and the beauty of the natural environment, being the county with the largest number of monasteries and churches in the country. The many historical monuments and picturesque landscapes, the diversity of flora and fauna, and the surprising customs and traditions complete the rich heritage of the destination.

All these assets contribute to highlighting the uniqueness of **Neamț Land**, and the county public administration aims both at increasing the tourism development of the county, cultivating the feeling of belonging amongst its inhabitants and introducing the visitors into a fascinating region with an impressive past and future alike.

For all the above mentioned reasons, I heartily invite you to discover the amazing natural, cultural and ethnographic heritage of Neamț County, a land of authentic spiritual values.

I am convinced that visiting **Neamț Land** will turn out to be an unforgettable experience for you.

Ionel ARSENE

President of Neamț County Council



VISIT NEAMT

www.visitneamt.com

Bicaz Gorges



"The Stone Kingdom" of Bicaz Gorges is a particularly picturesque area in Neamț Land. Considered the most famous gorges in Romania and most spectacular limestone valleys in Europe, they are located in the central part of Hășmaș Mountains, in the Eastern chain of the Romanian Carpathians.

The protected area displays a fantastic view for any traveller passing by: giant stone walls, of over 300m high, crossed by the furious waters of Bicaz creek, make way for a serpentine road of rare beauty.

Accompanied by the harsh voice of the wind, each stone giant has a story to tell: "The Altar Stone", impressively and majestically guarding the road, recalls those times when the Dacians, Romanian's ancestors, used to practice their worship rituals here, about 5000 years ago; "The Hell's Throat", where the rocky massifs meet up in the sky, evokes memories of the harsh battles with the elements, which it had conquered over the ages, while "The Guardian", a straight wall that completes the apocalyptic landscape, is proud to tell about all the brave climbers who tried to escalate it, in the attempt to push their limits.



GPS N 46 49.171 - E 25 50.454

Geographic data:

- Bicaz Gorges are located in "Cheile Bicazului-Hășmaș" National Park, have a total length of about 5km and altitudes between 1300-1500m

Events you are invited to attend:

- "Arminideni" - herding sheep to the mountains - May
- Mountain Bike - September, info phone: +40 728 116 828 / +40 748 701 717
- "At the foothill of Hășmaș Mare Peak" National Folklore Festival - July, info phone: +40 757.196.506

Leisure:

- Hășmaș Marathon - August, info phone: +40 740 162 496
- Mountain climbing and hiking trails for professionals

Șugăului Gorges - Munticelu



Located in the immediate vicinity of Bicaz Gorges, Șugăului Gorges are one of the most valuable protected areas both in the Carpathians Mountains and in Europe, due to its unique landscape, geology, karst, flora and fauna. They form a wild-looking rocky area, with canyon-like appearance, on some 350 m long area, along which there is also a row of waterfalls.

Inside the protected area, various scientific research activities, mountain and ecological education, hiking and climbing, cave exploration and trekking are available.

If you were a true lover of nature, if you reached the area having in mind to admire treasures of beauty "on site" and not just scattered on either side of the road, all you need to do is think about having a few-hour stop amidst these so little known and deciphered wonders of the uninterrupted events of geological evolution.



+40 757 376 566

GPS N 46 49.200 - E 25 50.360

Leisure:

- Via Ferrata "Astragalus", the longest Via Ferrata route in Romania - 700 m length of the main route. Tourists can choose between five climbing routes, with varying degrees of difficulty (A/B; C; C/D). The arrival is on Turnul Mare Peak (altitude of 1000m), with a level difference of about 285m. Travelling the main route takes between 90 and 150 minutes, and the minimum age for participants is 8 years old for light trails.

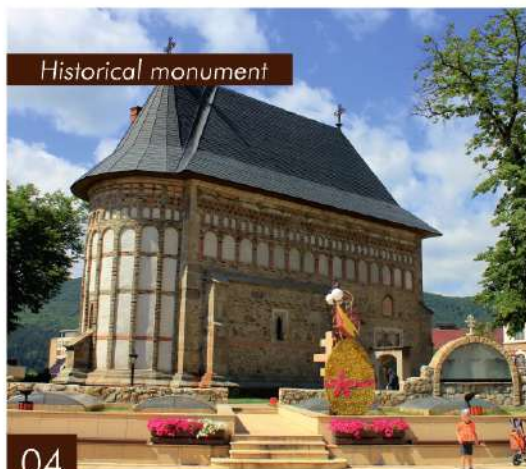
Princely Court in Piatra-Neamț



Historical monument

Inherited from Stephen the Great, first certified in documents in 1491, the Princely Court in Piatra Neamț represents a genuine effigy of nobility. The edifice is illustrative for the architectural complexes in Moldavia of Middle Ages and used to represent the administrative core around which the entire administrative affairs of the Princely Court gravitated. The Princely Court was the place where all important decisions of the Prince were issued forth. Also, it was the place where both the Prince and his high representatives in the territory used to judge various causes and grievances of the people, and where the gathering of the territorial army took place.

Princely Church



Historical monument

Through the harmony of shapes and exterior decorations and the inconspicuous monumentality, the complex fully illustrates the beauty of the Moldavian architecture during the rule of Stephen the Great.

The church, having as its Dedication Day the "Nativity of St. John the Baptist" was erected between 1497 and 1498, and has a rectangular plan, without a spire, which extends on a length of 25,90m and a width that varies between 8,40m and 9,30m.

The edifice was endowed with precious objects of ceremony, the oldest such piece that has been preserved until today is a Tetraevanghel (the Four Gospels), presented as a gift by Stephen the Great in 1502, currently exhibited at the National History Museum of Romania.

The Tower of Stephen the Great

The 19m high belfry was erected in 1499 under the rule of Stephen the Great and has become iconic for the town.

From an architectural point of view, the main characteristic of the belfry consists of the joining of the square plane of the lower register with the octagonal plane of the upper register.

Over the centuries, the tower has undergone some changes in aspect, especially in the Modern Age, without compromising its architectural value. The tower was extended through an overhanging of its walls, used by the firemen. From up there, visitors can enjoy almost a bird's-eye view of Piatra Neamț. In 1890, a clock has been set in the belfry, which is still preserved and working today.

+40 233 216 808

GPS N 46 55.992 - E 22 22.104

Events you are invited to attend:

- Princely Court Fest – medieval festival - April; info phone: +40 748 146 798
- Piatra Fest - June; info phone: +40 748 146 798
- Musical Vacations in Piatra Neamț - July; info phone: +40 233 214 026
- Christmas Fair in Neamț - December; info phone: +40 233 214 026



Historical monument

Princely Court in Piatra-Neamț

Cucuteni Eneolithic Art Museum



Historical monument

Cucuteni Eneolithic Art Museum in Piatra Neamț, housed in a beautiful building belonging to the Princely Court Ensemble in Piatra Neamț, built in 1930, shelters the richest and most valuable collection in Europe of artefacts belonging to Precucuteni-Cucuteni Culture. On display, various ceramic objects, distinguished by their monochrome, bicrom or tricrom paintings, elegant and refined shapes that offer a comprehensive preview of the decorative and figurative art belonging to the most important Eneolithic culture in Southeastern Europe.

Developed between 3600-2600 B.C., the collection includes some eight hundred items, most of them tanking in the hoard category. Here, you can admire priceless exhibits such as "The Small Columns Vessel", "Frumușica Hora", "Hora-type Vessel", statuettes in the group "The Goddesses' Synaxis", "The Thinker of Târpești".

Considered to be the highest achievement of the Eneolithic Era in Europe, ceramics belonging to Cucuteni Culture attain perfection through the motives of the decoration, predominantly the geometric spiral meander motives, painted with natural pigments, and sometimes with the artist's own blood, as the researchers say. The smallest statuette in the museum measures only 1,2 cm high and belongs to the statuette group called "The Holy Family".

+40 233 226 471

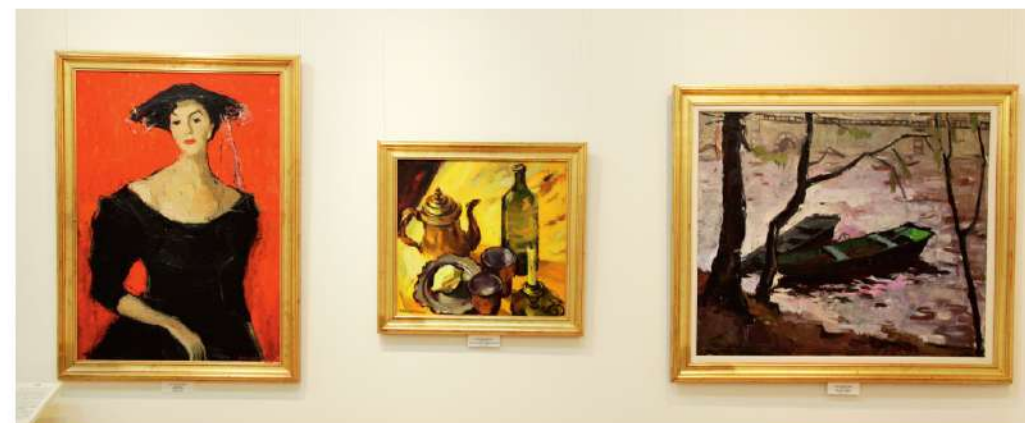
GPS N 46 56.009 - E 26 22.119

Events you are invited to attend:

- Long Night of Museums - May, 19



Art Museum



Pursuing the national specificity and its interference with European values, the gallery displays the work of artists who developed their roots in or who entertained emotional ties with Neamț County, such as C.D. Stăni, Aurel Băeșu, Lascăr Vorel, N. Milord, Clement Pompiliu, Iulia Hălăucescu, and shelters important selections of their work.

+40 233 216 808



Historical monument

Princely Court in Piatra-Neamț

Ethnography Museum



With its picturesque architecture, the museum displays since 1960 aspects of a peasant's house on Bistrița Valley, the folk dress, the main occupations and crafts in the sub-Carpathian region of Moldavia, and details related to farming.

+40 733 939 453



Historical monument

Events you are invited to attend:

▪ "The Hope Chest" Folk Art Festival - May; Info phone: +40 740 740 300

Youth Theatre



Historical monument



Aiming to provide a framework for testing and empowering young talents at the beginning of their career, Youth Theatre Piatra Neamț opened its doors to the public in 1943, and is nowadays a prestigious cultural institution and a landmark of Neamț County and of the Romanian cultural heritage itself. Over time, Youth Theatre has become a youth outpost in Romanian theatrical movement and thus earned its reputation as a launching ramp for young actors, directors, set designers, composers who have later developed outstanding professional careers.

Through its various programs, Youth Theatre provides its public with a theatrical offer which stands apart through high quality performances, diversity, innovation, nonconformism, inviting spectators of all ages to become an active part in the cultural act, from reflecting on the theatrical products to co-production and playwriting. Also, Youth Theatre is an active promotor of a series of intercultural projects which mainly focus on realizing a valuable, coherent dialogue between very different forms of art and cultures, worldwide.

+40 233 211 036; +40 752 149 735

GPS N 46 55.935 - E 26 22.087

Events you are invited to attend:

▪ Piatra Neamț Drama Festival - September

Vânători-Neamț Natural Park in Neamț County is the only place in Europe where the bison, heraldic symbol of Moldavia and the largest land animal on the continent can be seen, in three kind of habitats: in the wilderness, in the forest, in semi-freedom, in the acclimatization enclosure at the "Bisons Management Centre", and in the zoo of the Park.

The process of releasing the bison, a legendary species of terrestrial mammals, into the forests in the northern part of Neamț County began in spring of 2012, when five bisons (three males and two females) were released. Nowadays, after seven years have gone by, there are over 36 bisons in Neamț, of which 12 calves were born right in the wild forests of the Park that extend on more than 172.973 acres.

As a recognition of all efforts made to preserve the species, "The Land of the Bison" in Neamț has been included in Top 100 Sustainable Destinations worldwide, both in 2017 and in 2018. This is the only Romanian tourist destination awarded in this competition, attended by 57 different countries and assessed strictly by a group of about 60 international experts. The global contest is organized by Green Destinations in partnership with other international organizations working in the field of sustainable tourism.

Natura 2000



+40 233 251 060

GPS N 47 08.582 - E 26 15.024

Leisure:

- Tour of the monasteries across Vânători-Neamț Natural Park – by car - 1 day
- Bison Safari - Walking the trails of the bisons in Vânători-Neamț Natural Park – by car and by foot - 1 day
- Nature and sacredness tour - by car and by foot - 4 days

Neamț Fortress



Historical monument

Commissioned by Petru I Mușat and then extended and consolidated under the rule of Stephen the Great, who also set up a defense trench with an arched bridge, the imposing fortress resisted many sieges of the many enemies. Important pages of heroism were written here, such as the eight-day opposition to the furious Ottoman siege led by none other than the fearsome Mehmed the Conqueror following the battle of Războieni (1476) or the glorious episode written in their own blood by the 19 frontier guards facing the Polish army led by Jan Sobieski, in 1691. All these stories still reverberate with life behind the stone walls, captivating the visitors.

Recently restored under the PHARE Program, the fortress rises tall on the hill bordering Târgu Neamț town and is a medieval monument of exceptional historical value in Romania. It stands as a living proof of the historical turmoil of Neamț County and the bravery of men defending its borders. Every year, close to the 2nd of July, the day when people commemorate the Holy Prince Stephen the Great, locals celebrate "Days of Neamț Fortress", a much beloved event gathering thousands of people in Târgu Neamț.

+40 733 981 798



GPS N 47 12.849 - E 26 20.599

E Events you are invited to attend:

- Days of Neamț Fortress – July

Neamț Monastery



First certified in documents in 1210, it is acknowledged as one of the oldest and most significant monastic settlements in Moldavia, and was built between the 14th and 17th centuries, under the auspices of benefactors such as Petru I Mușat, Alexander the Blessed and Stephen the Great. The monastic settlement includes the church, dating back from the 14th century, an invaluable religious art museum and a museum of print, and the oldest monastic library, counting over 12,000 volumes in 1862, testimonies about significant historical, theological, cultural and artistic facts.

The scholarly and spiritual traditions of this monastery are connected to the brilliant activity of a renowned school for calligraphers and miniaturists, trained under the guidance of Gavril Uric and a printing press organized soon after the 1500, which enhanced the fame of orthodoxy. In the great church, the most beautiful of the churches commissioned by Stephen the Great, there is also a miraculous icon of Our Lady, painted in Israel in 665.

+40 233 251 580; +40 745 212 708



Historical monument

GPS N 47 15.803 - E 26 12.553

E Events you are invited to attend:

- The Ascension of the Lord – Neamț Monastery Dedication Day – April

Aquatic Reserve



Also known as "the sea between the mountains", it is the largest reservoir on inland rivers in Romania, and the only lake on which the "Navy Day" is celebrated.

The lake stretches its wide reflecting surface over 35 km long, at the foothill of Ceahlău Massif, and the volume of water contained behind the impressive dam, built between 1950 and 1960, can reach up to 1,250 million cubic meters. The dam was built according to

the design conducted by Eng. Dimitrie Leonida as a "weight" dam, the largest of its kind on inland rivers in Romania. Having 127m height, it ranks third in the country and ninth in Europe, in terms of height.

Once reached the pinnacle in Hangu, tourists can admire the amazing nature in all its splendour and be enraptured by the perfect reflection of Ceahlău Massif ("The Pawn") in the still waters of Lake Izvorul Muntelui.

GPS N 46 56.334 - E 26 06.164

Events you are invited to attend:

- Navy Day - August, 15
- Kayak Fest - June, info phone: +40 723 297 471

Leisure:

- Leisure rides, cruise, pedal boat, speed boat, kayak
- Angling

Natura 2000

"At the splendour of the sky,
I could see Ceahlău westward,
Far away in the horizon,
The giant's forehead in the sun,
Standing guard to fatherland!
A cloud – a passing secret so to speak,
A neighbour to the mountain peak
Was floating in the pure blue sky
While having lost its wings to fly!
And all the skies did fill
With chirping songs."

"Summer" by George Coșbuc

None of the mountains in Romania has ever charmed the eyes or ignited the imagination of hikers as Ceahlău Massif has.

It majestically rises tall, like a giant dome of the Eastern Carpathians, on the legendary territory of Neamț Land. Ceahlău is much like a huge and impressive open-air museum displaying exhibits

unique in their diverse shapes, each having a legend of its own: Dochia, Panaghia, Toaca, Dorobanțul, the Monks, the Rock in Tears, Butu's Tower, the Shelves with lilies, Detunatele - and many, many others ... It is a vast island of flora and fauna, exquisitely refined through ancestral geological turmoil.

Also known as “the Holy mountain of the Dacians” or “the mountain of prayer”, its legendary allure is complemented by its impressive, massive appearance, and a certain mysterious aura surrounding it. Dominating the mountains around, due to its relatively lonely position, which allows its perfect visibility, like an old pyramid or a promontory, Ceahlău Massif is easily seen from many parts of Moldavia and Transylvania.

Consisting of a radius peaks system that converge to two points of maximum height, Ocolașul Mare Peak (1907m) and Toaca Peak (1904m), Ceahlău Massif stretches on more than 290km², of which only 10% is occupied by the alpine abyss delimited by steep stone walls, which create the appearance of a citadell. When walking the paths of Ceahlău, you can enjoy the harmonious blend between the open skyline -at times reaching the seashore- and the magnificent, overwhelming lace of the corners, towers, shelves, and stone walls.

Each year, on the 6th of August, many people climb “the Holly mountain” to attend in the religious service at the hermitage on top of the massif. This is an ancient ritual, dating back more than 5000 years ago, when the ancestors used to worship the Sun God and bring him offerings. The Dacians, Romanian's ancestors, strongly believed the mountain was sacred, as every year, at the beginning of August, the top of Ceahlău Massif is the place of appearance of a unique phenomenon in the world - “The Shadow of the Pyramid”.

The phenomenon occurs from the early days of August and reaches the maximum intensity exactly on the 6th of August at sunrise, when the shadow of Toaca Peak overlapped over the shadow of Piatra Ciobanului Peak forms a natural hologram resembling a perfect pyramid, which can be seen for over 80 minutes. The magnitude of the phenomenon maintains and enhances the aura of mystery and sacredness of Ceahlău Massif, and annually attracts thousands of tourists to walk its trails.

+40 233 256 600

GPS N 46 57.211 - E 25 59.203



Events you are invited to attend:

- Ceahlău Mountain Festival – August

Leisure:

- “Bate Toaca” – mountain running competition – June

"Ion Creangă" Memorial House



Historical monument

An entire rural universe dating from mid-nineteenth century with its picturesque fragrance of the era surrounds the visitors from their very steps on the trodden path to the house. The exhibits of this memorial house -one of the most visited in the country- are filled with the aura of Creangă's recollections, a prominent representative of a landmark full of historical and spiritual traditions.

The museum house has been restored, preserving all the peculiarities of the archaic architectural design and daily life of times past. Inside the house, you will discover a rich collection of traditional household objects, a genuine ethnographic treasure. Built in 1830 by Petrea Ciubotariul -Ion Creangă's grandfather-, the house became a museum in 1951. The simplicity of the courtyard and the house, the interiors specific to the traditional village in Neamț area, reminding of the beautiful Moldavian traditions, emanate a sweet and gentle tranquility—so dear to any soul, tired of the hustle and bustle of everyday existence. Here you can experience the sensation that Nică's adventures intertwine with those of your childhood, and the child within you is reborn, allowing you the pleasure of entirely immersing yourself in the serenity and carelessness of that time.

+40 233 790 620

GPS N 47 11.855 - E 26 21.274

Events you are invited to attend:

▪ Days "Ion Creangă" – March



"Neculai Popa" Ethnography Museum



On a green slope, behind a traditional fence, the gate opens onto a large yard, with an open-air alley. On either side of the alley, among fruit trees, you will see many fairy-tale characters -carved in wood or stone- that enliven the entire atmosphere, and at the end of the alley a traditional house with wooden porch stands firmly on the ground. It is the house of the famous artisan Neculai Popa from Târpești -Petricani, transformed into a true ethnographic museum.

The layout of the yard, between the old house and the more recent one, is that of an open-air museum whose harmony between nature and naive art enchants the visitors. You will be charmed inside the house, too - it is filled like a beehive with rich collections of authentic art, gathered from among the villages around Târpești.

Should you be willing to listen, "The Piper", one of the statues carved in stone by the artisan, will sing you about the famous craftsmen of Târpești village. The masks with intriguing faces will show you villain features of the people, and the plethora of fairytale characters sculpted in wood or stone which decorate the yard stand as testimony of a genuine, yet bygone talent.

+40 747 134 040; +40 758 640 653

GPS N 47 09.107 - E 26 25.810



Lake Cuejdel



Natura 2000

Mild hills overlapping, wide deciduous forests, green pastures with sheep flocks, and the mirror of water of Lake Cuejdel bordered by a mountain slope which overturned its course, reveal the picturesque landscape of a mountain lake formed not long ago. This is Cuejdel, a natural dam lake, formed between 1978 and 1991 in Stânișoarei Mountains. With an area of about 281,700 acres and depths varying between 7m and 14m, it is nowadays the largest natural dam lake in Romania.

Lake Cuejdel, with many trunks of broken trees coming out of the still surface of the water, is a wild oasis, with captivating specimens of flora and fauna, a landscape changing colors from one season to the next, forever fascinating.



+40 233 211 696

GPS N 47 02.067 - E 26 13.028

Leisure:
hiking on marked trails

Lakes: Pângărați, Bâta Doamnei, Vaduri



Natura 2000

Lake Pângărați



Natura 2000

Lake Bâta Doamnei



Natura 2000

Lake Vaduri

GPS N 46 55.581 - E 26 12.024

Lake Pângărați

GPS N 46 93.637 - E 26 32.504

Lake Bâta Doamnei

GPS N 46 56.119 - E 26 14.646

Lake Vaduri



Located on both sides of DN15, Lake Pângărați, Lake Bâta Doamnei, and Lake Vaduri are three of the nine reservoirs arranged on Bistrița River course, certified as special protection areas.

These habitats are resided by numerous migratory birds species, protected both at national and European level, which use the Eastern Carpathian Corridor, thus becoming one of the most important wintering places in the region.

The slowly descending water banks and the shallow waters of the three lakes have favored the development of a rich vegetation that allows nesting and feeding the birds, especially swans and wild ducks, remaining in the area for winter.

Customs and traditions in Neamț County



Learned by doing over centuries and often connected to faith customs, which deeply penetrated the collective consciousness, are still observed today in Neamț villages. Customs have been strongly preserved owing to their value that stood the test of time, and have been accepted by the entire community. Each village has its own customs and rules governing their life and work. In the mountain villages, you can still attend the shepherding in spring and round-up and sorting the sheep in autumn.



Corvées, evening sittings, the hora, accompanied by music played on the flute, pan flute, trumpet, and drums are still present in the village. Many foreign travelers and Romanian scholars highlighted the rich variety of folk music and dance in the area. Dimitrie Cantemir noted, "Moldavians have over a hundred various dances and some so exquisite that the dancers seem not to touch the ground but they appear to fly."



Winter holidays traditions form the longest, richest and merriest folk festival. They represent the living archive of the inhabitants' spirituality, better preserved in Moldova and especially in the villages of Neamț County. Carols are a must on Christmas festivals – carols and religious theme dramas are performed by groups of children or youth. The New Year is greeted with "Pluguşorul", the small bottomless barrel covered with skin, cattle or sheep bells, and even with an ox-driven plough. Then, the village sky is filled with sounds of "sorcova" and spectacular mask dances: she-goat, stag, bear, young horsemen dance, and the outlaws' drama.

The production of popular masks is representative for Neamț County. With skill and craftsmanship, folk artists make hundreds, even thousands of head masks, with an undeniable emotional component, most of which represent animals of all kinds: goat, ram, horse, bear, wolf, stag, or various known characters from fairytales and local folklore.



Traditional clothing in Neamț County



Born from people's ability to perceive and appreciate cultural and natural values, the folk art in Neamț area expresses the peasants' outlook and sensitivity, their aesthetic beliefs and their artistic refinement.

Maintaining a conservative character, by means of rules and canons kept in community awareness, the villagers have passed on down the generations the encoded and extremely rich language of folk art.

The simple shapes and the balanced proportions, the sensible layout and decorations, the geometrical style of representations, the discrete and harmonious colors always impress the beholder. The folk dress and costumes in Neamț area impresses with an exceptional piece: the sheepskin vest embroidered all over its surface and with grey astrakhan fur hemming all around.

Worn as Sunday clothes in church and on all holy days by performers of folk dance and music, the folk dress and costumes in Neamț area are still present today in our everyday life.



E Events you are invited to attend:



"Florile Ceahlăului" National Festival of Folk Music for Children and Young People - March



"The Hope Chest" Folk Art Festival - May



Traditional Romanian Shirt Day - June



"Ceahlăul" International Folk Music Festival - August

+40 233 211 696



The cuisine in the historical region of Moldova is considered to be one of the tastiest in the world, both for the large number of popular dishes and for the many gourmet shades given by the inspired combination of produce, tools and some due to the Slavic or Greek influence.

So, we invite tourists to serve a boletus borsch, a pork stew and spiced cabbage pie, or scrambled eggs with finely chopped meat, mincemeat croquettes "sprinkled" with plum brandy with fenugreek. Moreover, we trust that visitors will appreciate the "hârzob" (trout smoked in fir branches), the monastic chicken, the pickled Saffron milk caps, and the cheese polenta or potato and onion pies called "guguluf". As for the dessert, tourists are invited to have some shepherd's pie, the famous "poale-n brâu" pies or a teaspoonful of raspberries, blueberries or roses confiture. In the Christmas season, housewives will offer the Moldavian pork stew and the "julfa", a delicatessen of fine pastry sheets stuffed with crushed hemp seeds, also known as "Jesus' Diapers".

Berries such as blueberries, cranberries, strawberries, raspberries, and blackberries are presented in the menus under various forms: confiture, sorbet, jams, in a diverse range of delicious cakes, side dish, juices, teas, syrups or the highly appreciated berry-brandies.



Acacia, lime tree, rape or poly floral honey completes the rich variety of produce, together with local herbs used for fragrant teas such as wild thyme, St John's Wort, cowslip, berries, acacia, elder, lime tree, mint, and many more.

Freshly gathered mushrooms or the fresh fish are on offer at guest houses. All sorts of preserved vegetables during autumn – such as pickled ones or "zacusca" appetisers, made according to many and varied recipes known only to the local housewives, make up diverse menus visitors can indulge themselves with as if they were attending a royal feast.

Each guest house in the Neamț area has its own menu, carefully selected to please its guests. They are made with home-grown ingredients in the very garden of the guest house or in the households of the villages nearby.



Useful Information

Piatra-Neamț National Centre for Information and Tourism Promotion


Address: Petrodava Square, Piatra Neamț, Neamț County
Phone/fax: +40.233.271.591
Programme: Monday – Sunday, 10 A.M. – 5 P.M.
contact@cnipitratroneamt.ro; www.cnipitratroneamt.ro

Bicaz National Centre for Information and Tourism Promotion

Address: Barajului Street no. 4, Bicaz, Neamț County
Phone/fax: +40.233.254.028
Programme: Monday – Friday, 8 A.M. – 4 P.M.
turism@primariabicaz.ro; www.bicaz-turism.ro

Târgu Neamț National Centre for Information and Tourism Promotion

Address: Ștefan cel Mare Avenue no. 42, Târgu Neamț, Neamț County
Phone/fax: +40.333.109.616
Programme: Monday – Friday, 8 A.M. – 4:30 P.M.
cnipitgneamt@yahoo.com; www.tirguneamt-turistic.ro

 Centrul-National-de-Informare-Turistica-Targu-Neamt

Emergency Services

Phone: 112 from everywhere in the country

Wood carvers

- Vasile Găman, Lunca village, Vânători Neamț commune, phone: +40 736 324 173
- Ștefan Grigoriu, Târgu Neamț, phone: +40 742 925 725, stefan_grigoriu@hotmail.com
- Vasile Neamțu, Nemțșor village, Vânători Neamț commune, phone: +40 755 286 031
- Constantin Lungu, Humulești, phone: +40 233 790093, +40 742 999 506, palmarat@yahoo.com

Stone sculpting

- Neculai Popa Museum, Târpești village, Petricani commune, phone: +40 758 640 653; +40 747 134 040

Furrier artisans

- Dudanu Vasile, Suseni village, Grumăzești commune, phone: +40 740 999 505
- Dolhescu Nicolae, Pipirig commune, phone: +40 754 555 165

Artisans - Basket workers

- Ionel Damian, Barțicești village, Botești commune, phone: +40 761 743 536
- Iosif Chelaru, Barțicești village, Botești commune, phone: +40 749 929 101

Artisans - Homemade fabric

- weaving - Maria Mihalachi, Bălțătești village, phone: +40 728 028 423, mariamihalachi@yahoo.com
- weaving and needlework - Rodica Ciocărlău, Boboiești village, Pipirig commune, phone: +40 740 671 831
- weaving - Maria Robu, Săbăoani village, phone: +40 761 507 923
- weaving and knitting - Maria Brânzucă, Ceahlău village, phone: +40 753 588 168
- decorations made of hemp - Elena Ciocărlan, Șerbești village, Ștefan cel Mare commune, phone: +40 749 811 589, e_ciocarlan@yahoo.ro

Ceahlău National Park Management Direction

Address: Durau Resort, Ceahlău Commune, Neamț County
Phone: +40.233.256.600, +40.728.963.543
pnc@ceahlaupark.ro; www.ceahlaupark.ro

Ceahlău National Park Visitor Centre

Address: Izvoru Muntelui, Bicaz, Neamț County
Phone: +40.233.256.600
pnc@ceahlaupark.ro; www.ceahlaupark.ro
Programme: Tuesday – Sunday: 9 A.M. – 5 P.M.; Closed Mondays

Vânători Neamț Natural Park Management Direction

Address: Zimbruului Street no. 2, Vânători Neamț Commune, Neamț County
Phone: +40.233.251.060
catanious@yahoo.com; nicudolhescu@yahoo.com
www.vanatoriipark.ro

Neamț Mountain Rescue

Address: Durău, Ceahlău Commune, Neamț County
Phone: +40.233.256.009,
salvamont.nt@gmail.ro;  Salvamont-NEAMT

- weaving, tapestry, adornments - Children's Club Săbăoani, phone: +40 233 735 025
- bead adornments - Doina Solomon, Roman, phone: +40 743 906 941
- knit decorations - Maria Vasiliu, Târgu Neamț, phone: +40 745 502 525
- needlework, weaving, folk dress and costumes - "Nemțeanca" Artisans' Association, Târgu Neamț, phone/fax +40 233 790 319, +40 744 362 464

Mask artisans

- Ion Albu, Timișești village, phone: +40 233 781 813, +40 722 689 084
- Ciocărlan Vasile, Ștefan cel Mare village, phone: +40 749 811 589, e_ciocarlan@yahoo.ro
- Ionela Lungu, Humulești, phone: +40 233 790 093, +40 742 999 506, palmarat@yahoo.com
- Constantin Lungu, Humulești, phone: +40 233 790 093, +40 742 999 506, palmarat@yahoo.com

Icon - painting artisans

- on glass - Hăisan Cecilia, Piatra Neamț, phone: +40 746 833 870, cecilia_haisan@yahoo.ro
- on wood and fresco - Ciprian Istrate, Piatra Neamț, phone: +40 741 088 782, cipist@yahoo.com

Masters of confiture in Neamț County

- confiture, sorbet, syrups - Agapia Nunnery, phone: +40 233 244 736
- confiture, sorbet, syrups - Văratcă Nunnery, phone: +40 233 244 616
- Vranceaia's "zacusca" appetisers and confiture - Valentina Lungu, Dumbrava Roșie village, Baltagului Str. no. 63, phone: +40 731 327 627, www.zacuscatraditionala.wordpress.com
- traditional confiture - Socoa Cristina, Poloboc village, Rădău commune, phone: +40 756 948 041
- cold-pressed sunflower oil, confiture and "zacusca" - Valeri Rebegea, Dobreni village, phone: +40 754 757 420

Accommodation and meals



Piatra Neamț: CENTRAL PLAZA Hotel****, phone/fax: +40 233 216 230, +40 233 216 232, office@centralplazahotel.ro; GRAND HOTEL CEHLĂU****, phone: +40 233 219 990, fax: +40 233 215 540, office@hotelcehlau.ro; TORENT Hotel****, phone: +40 742 219 229, pensiuneatorent@gmail.com; GALAXI Villa***, phone: +40 233 626 676, +40 745 636 345, mreajisienache@yahoo.com; **Guest Houses:** CASA MOLDOVEANĂ***, phone: +40 233 233 666, +40 749 538 874, pensiuneacasamoldoveana@gmail.com; PĂRĂUL DOAMNEI***, phone: +40 758 046 822, +40 743 972 193, parauldoamnei@yahoo.com; BACHUS***, phone: +40 233 226 402, fax: +40 233 221 760, rezervari@pensiuneabachus.ro; CORNELIUS***, phone/fax: +40 233 211 511, pensiuneacornelius@yahoo.com; DOMNIȚA***, phone: +40 233 228 267, www.pensiuneadomnita.ro; LIDO***, phone: +40 723 258 094, +40 744 521 773, office@pensiunealido.ro, contact@pensiune-lido.com

Târgu Neamț: VICTORIA Hotel***, phone: +40 233 790 270, fax: +40 233 790 843, rezervari@hotelvictoria-targuneamt.ro; OZANA Hotel***, phone: +40 755 026 666, rezervari@hotelozana.com; CASA ARCAȘULUI Hotel***, phone: +40 233 790 699, casaarcasului@yahoo.com; **Guest Houses:** ARISTOCRATIS***, phone: +40 233 791 986, contact@aristocratis.ro; BELLA***, phone/fax: +40 233 790 291, mana_atomei@yahoo.com; CASSANDRA***, phone: +40 755 656 016, +40 742 052 707, adinagavrilaoia@gmail.com; LA CETATE***, phone/fax: +40 233 660 249; LA STRUȚI***, phone: +40 720 065 308, lastruti.pensiune@gmail.com, www.pensiuneolastruti.ro; TREI STEJARI***, phone: +40 740 509 143, +40 751 190 529, +40 754 657 069, titibabic@yahoo.com; STEAJA NORDULUI***, phone: +40 744 704 271; VOIAJORUL***, phone: +40 749 116 687, +40 749 520 718, pensiune.voiajorul@yahoo.com; FANNI***, phone: +40 743 260 056, +40 757 191 700, electrachim@yahoo.com; LA CETATE Bungalov***, phone/fax: +40 233 660 249

Roman: Hotels: MARIKO INN***, phone: +40 233 742 525, +40 233 744 322, fax: +40 748 886 668, marikoinn@yahoo.com, www.mariko.ro, ROMAN***, phone: +40 233 742 600, +40 233 740 831, office@hotel-roman.ro; ZARA***, phone: +40 233 733 731, +40 727 067 435, hotelzara_roman@yahoo.com; DOINA Guest House***, phone: +40 744 524 930, doinamazare@yahoo.com

Bicaz: ADORA Hotel***, phone: +40 233 253 059, +40 741 793 079, contact@hoteladara.ro, www.hoteladara.ro; **Guest Houses:** AURORA***, phone: +40 721 705 754, vilaceahlau@yahoo.com; CEHLĂU***, phone: +40 233 254 555, +40 743 785 390, +40 787 614 860, adina_gabita@yahoo.com; PESCĂRUȘ***, phone: +40 233 254 080, +40 748 110 401, office@bicazlac.ro; BIA PĂPĂDIA***, phone: +40 233 227 659, +40 745 653 849, cabanaobiapapadia@yahoo.com; LEBADA River Vessel***, phone: +40 748 110 401, office@bicazlac.ro; **Chalets:** BARAJ***, phone: +40 748 110 400, IZVORUL MUNTELUI***, phone: +40 233 247 039, +40 744 597 141, cabanaizvorulmuntelui@aia.ro, www.cabanaizvorulmuntelui.ro; Cheița Trout, phone: +40 233 253 143

Agapia: **Guest Houses:** VĂRATEC***, phone/fax: +40 233 245 113, rezervari@pensiuneavaratec.ro; AGAPIA***, phone: +40 746 790 742; CASA DINTRE PINI***, phone: +40 740 245 985, anaparu57@yahoo.com; CODRII DE ARAMĂ***, phone: +40 233 244 900, fax: +40 233 244 999, cristianacula1961@gmail.com; EDEN***, phone/fax: +40 233 247 217, office@edentur.ro; EULOR***, phone: +40 744 648 907, pensiuneagapia@yahoo.com, www.pensiuneagapia.ro; MARIA***, phone: +40 233 245 004, +40 744 790 466, contact@pensiuni-agapia.ro; CASA ANCA***, phone: +40 233 244 819, casaancaagapia@gmail.com; CASA DE LA VĂRATEC***, phone: +40 233 272 562, +40 744 423 743, rezervari@casadelavaratec.ro; DARIA***, tel. +40 742 899 549, +40 752 484 940; contact@pensiunea-daria-varatec.ro

Alexandru Cel Bun: BELVEDERE Hotel***, phone: +40 233 261 470, office@hotel-belvedere.ro; **Guest Houses:** BASIL****, phone: +40 233 241 689, +40 728 585 832, office@basil.ro; AURA TOUR****, phone: +40 233 234 269, liceulauroraovatu@yahoo.com, LORY****, phone: +40 748 939 209, cichicristian@yahoo.com; ALEXIA***, phone: +40 749 815 934; AMBIANCE***, phone: +40 745 483 793, cazare@ambianca.ro; BOEMA***, phone: +40 743 063 655; boempension@yahoo.com; BRADU***, phone: +40 755 535 260; FLORA***, phone: +40 742 247 530; MOLDOVA***, phone: +40 748 825 294, contact@pensiuneamoldova.ro; OANA II***, phone: +40 233 241 362; ROUA***, phone: +40 333 404 068, +40 753 053 260; SMĂRÂNDIȚA***, phone/fax: +40 233 241 730, pensiuneasmrandita@yahoo.com; RAZA SOARELUI***, phone: +40 745 356 634, iosubconstantin@yahoo.com; ȘTEFAN***, phone: +40 744 871 429, +40 741 100 244; TROIAN***, phone/fax: +40 233 241 444, office@troian.aix.ro; URSULE***, phone: +40 233 261 441, pensiuneursulet_nt@yahoo.com; MAGNOLIA***, phone: +40 728 945 926, +40 233 241 024, silveanuioan@yahoo.com; CAMENA***, phone: +40 233 233 381, +40 744 544 967, office@pensiuneacamena.ro

Bălțătești: Hotels: BĂLTĂTEȘTI***, phone: +40 233 244 017, NARCISA***, phone: +40 233 244 218, 244 017, fax +40 233 244 077; OZANA***, phone: +40 233 244 017, fax: +40 233 244 077; TOPOLIȚA***, phone: +40 233 244 017, statiuneabaltatesti@mapn.ro

Bicaz Chei: **Guest Houses:** TEO****, phone: +40 744 472 309, +40 744 590 904, pensiuneateo@cazarebicaz.ro; VERESKO****, phone: +40 745 283 114, www.vereskovilla.com, reservation@vereskovilla.com; TEO Cottages***, phone: +40 744 385 482, +40 744 472 309

Bicazu Ardelean: PALEU Guest House***, phone: +40 233 255 393, +40 733 692 467, +40 740 803 439; "Bistra Montană" Trout, phone: +40 744 702 953, +40 745 498 681, www.pastravaribistramontana.ro

Borca: **Guest Houses:** POPASUL VÂNĂTORULUI****, phone: +40 749 313 340, ematofan@gmail.com; VITORIA***, phone: +40 233 268 267, +40 744 276 727, lia_excelsior@yahoo.com

Chalets in Ceahlău Massif: Fântânela Chalet, phone: +40 745 482 469; Dochia Chalet, phone: +40 730 603 801, rezervari@cabana-dochia.ro

Ceahlău: ECOTUR Resort****, phone: +40 233 258 571, rezervations@ecotur.ro; VILA PELLEGRIN***, phone: +40 744 985 484, vila.pellegrin@yahoo.com; **Guest Houses:** ȘOIMUL****, phone: +40 722 214 258, www.saimulscarbul.ro, office.sovineshti@kober.ro; ARTEDE***, phone: +40 720 550 767, office@arted.ro, www.arted.ro; CORBUL***, phone: +40 722 214 258, office.sovineshti@kober.ro; LAVINIA***, phone: +40 742 890 816, laviniaboccos@yahoo.com; PERLA***, phone: +40 723 589 715, cazare@perladurau.ro; AGNES***, phone: +40 758 583 528, +40 745 564 708, pancu.sorin@yahoo.com; ANTIA***, phone: +40 233 256 547, +40 744 545 253, antiastar@yahoo.com; TOTAL***, phone: +40 233 258 110, +40 374 910 944; VÂNĂTORUL***, phone: +40 745 009 603, +40 233 256 502, pensiuneavanatorul@yahoo.com; DARIA***, phone: +40 740 608 553

Accommodation and meals

Dobreni: BEATRIZ Guest House****, phone: +40 233 246 800, +40 745 335 137, contact@pensiunebeatriz.ro

Durău: Hotels: BISTRITA****, phone: +40 233 256 570, fax: +40 233 256 590, office@bistrita-romania.ro; CASA PELERINUL***, phone: +40 233 256 583; BRADUL***, phone: +40 233 256 634, fax: +40 233 256 501, hr_bradulbrandusa@yahoo.com; CAȘCADA Hostel***, phone/fax: +40 233 256 668, +40 745 430 047, office@hotelcascada.ro; CRISTINA 2 Villa***, phone: +40 233 256 673, +40 233 256 556, +40 725 892 111; Guest Houses: GOLD***, phone: +40 752 243 924, pensiuneaagolddurau@gmail.com; MARIA***, phone: +40 744 702 434; RAPSDIA***, phone: +40 745 570 757; GABRIELA***, phone: +40 744 509 394, cezarmocanu@yahoo.com; TERRAMONT***, phone: +40 766 620 365

Dumbrava Roșie: BALCOST Motel***, phone: +40 233 282 240, +40 744 679 868, motelbalcost@gmail.com; Guest Houses: ANDRA***, phone/fax: +40 233 282 559, +40 745 525 968 pensiune_andra@yahoo.com; BYBLOS***, phone: +40 233 280 993, +40 748 300 710, rezervare@pensiuneabyblos.ro; CLASIC***, phone: +40 233 282 290, dumbravalour@yahoo.com; OCTOGON***, phone: +40 745 532 262, rezervari@pensiuneoatogon.ro; RUSTIC***, phone: +40 233 280 939, +40 745 646 148, www.pensiunea-rustic.ro

Dulcești: CONDOR Motel***, phone: +40 233 761 001, +40 745 788 718, office@condorresort.ro

Farcașa: Guest Houses: ORIENT***, phone: +40 744 911 065, office@pensiunea-orient.ro; ORIZONT***, phone: +40 233 267 029, +40 744 702 408, +40 744 316 253, pensiuneaorizont@yahoo.com

Gârca: BALAN Guest House****, phone: +40 233 242 542, +40 747 768 607, +40 723 854 765, pensiuneabalan@yahoo.com

Girov: ELENA Guest House***, phone: +40 233 290 770, +40 744 283 754, +40 744 518 456, pensiuneaelena@yahoo.com; ANA***, phone: +40 233 290 221, +40 769 071 701, +40 769 071 704

Grințes: Guest Houses: Casa IOANA***, phone/fax: +40 266 315 812, +40 233 265 555, +40 736 998 025, casaiolana@yahoo.com; MARGARETA***, phone: +40 743 098 036, topoliceanumihai@yahoo.com

Hangu: Guest Houses: CASA BĂLAN***, phone: +40 233 242 542, +40 740 304 843, virginia_victor@yahoo.com; ESTIVAL***, phone/fax: +40 233 216 628, +40 745 146 313, hamion_sc@yahoo.com; IOANA***, phone: +40 741 597 473, +40 746 835 677, contact@pensiuneaioana.ro; LOSTRIȚA***, phone: +40 736 899 637, rezervari@pensiunealostrita.ro

Horia: MOTEL IMPERIAL Guest House***, phone/fax: +40 233 747 111, +40 722 305 028, motel_imperial@yahoo.com, contact@motel-imperial.ro

Izvoru Muntelui: IZVORU MUNTELUI Chalet***, phone: +40 233 247 039, cabanaizvorulmuntelui@aioa.ro; IZVORU MUNTELUI Bungalow***, phone: +40 746 906 522; IZVORU MUNTELUI Camping***, phone: +40 746 906 522.

Pângărați: BALAD'OR Guest House****, phone: +40 727 736 685, constantinbrauras@gmail.com; ONȚANCA***, phone: +40 233 240 703

Petricani: HANUL VERDE Guest House***, office@asvinea.ro

Pipirig: Guest Houses: CASA AFETELOR***, phone: +40 233 252 066, casafetelor@casafetelor.ro; MARIA MĂRIOARA***, phone: +40 233 790 279, +40 740 220 679

Poiana Teiului: Guest Houses: DOCHIA***, phone: +40 745 885 078; TEIUL***, phone: +40 746 709 494, craciunilorin15@yahoo.com; ELVI***, phone: +40 744 706 039; contact@elvi.ro; GEONĂ****, phone: +40 233 257 014, +40 788 454 793, cristipanaite70@yahoo.com, www.pensiuneageona.ro

Răucești: Guest Houses: CAMELIA***, phone: +40 751 017 774, cameliaapostolae@yahoo.com; BĂILE OGLINZI Resort***, phone: +40 233 790 111, fax: +40 233 790 317, statiuneaoglinzi@yahoo.com

Săvinești: CASA DRUMEȚULUI Guest House***, phone/fax: +40 233 281 147, +40 745 234 036, rezervari@casadrumetului.ro, opreasorin2@gmail.com

Secuieni: RALUCA Guest House****, phone: +40 233 743 742, +40 751 303 696, simona_chiselito@yahoo.com

Tarcău: Guest Houses: FORTUNA****, phone: +40 742 081 932, office@pensiunea-fortuna.ro, fortunastrajatarcau@yahoo.com; COROLA***, phone: +40 233 890 960, +40 744 427 785, pensiuneaacorola@yahoo.com; FRĂȘIN***, phone: +40 233 212 903, +40 731 328 535, +40 744 393 600, pensiunea.frasin@gmail.com

Trifești: IOANA Guest House***, phone: +40 744 218 913, +40 745 073 418, ocanceioanadalia@yahoo.com

Tupilați: Inns: HANUL ANCUTEI***, phone: +40 233 781 400, +40 744 548 075, www.hanu-ancutei.ro; HANUL RĂZEȘILOR***, phone: +40 730 608 141, +40 730 947 749, hanulrazesilor@yahoo.com, www.hanulrazesilor.ro

Vânători Neamț: Guest Houses: EDERA****, phone: +40 233 251 901, +40 745 436 818, +40 742 543 498, eurocompanytoursrl@yahoo.com, www.pensiuneaedera.ro; HAN MARIA***, phone: +40 233 790 196, +40 753 634 032, medaliniaef3@gmail.com; HANUL URȘILOR***, phone: +40 233 251 364, +40 726 143 784, hanul_ursilor@yahoo.com, www.hanulursilor.ro; PERLA NEAMȚULUI***, phone: +40 233 236 931, +40 744 776 366, perlaneamtului@yahoo.com, www.perlaneamtului.ro

Neamț County Map of Attractions



NEAMȚ COUNTY COUNCIL

Alexandru cel Bun Street no. 27, Piatra Neamț

Phone: +40 233 212890; fax: +40 233 211 569

E-mail: cjneamt@yahoo.com

Website: www.cjneamt.ro

E-mail: cjneamt.turism@yahoo.com

Travelers' Website: www.visitneamt.com

- | | |
|-----------------|----------------|
| Fortress | Guest House |
| Monastery | Sheepfold |
| Hermitage | Adventure Park |
| Museum | Horse riding |
| Memorial House | SPA |
| Local Artisan | Lake fishing |
| Natural Reserve | Fishing pond |
| Lake | Trout |



VISIT NEAMT

www.visitneamt.com